

Creating a Power Point Presentation with Turning Point

Creating the PowerPoint

Contact the Business Computer Lab to Install Turning Point V5 on your faculty machine.

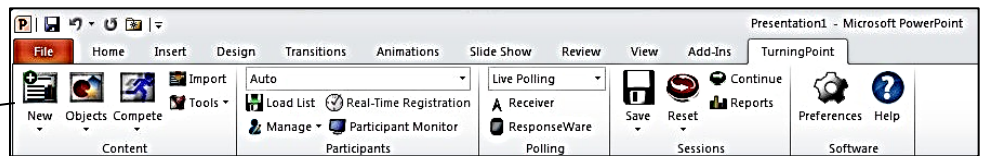
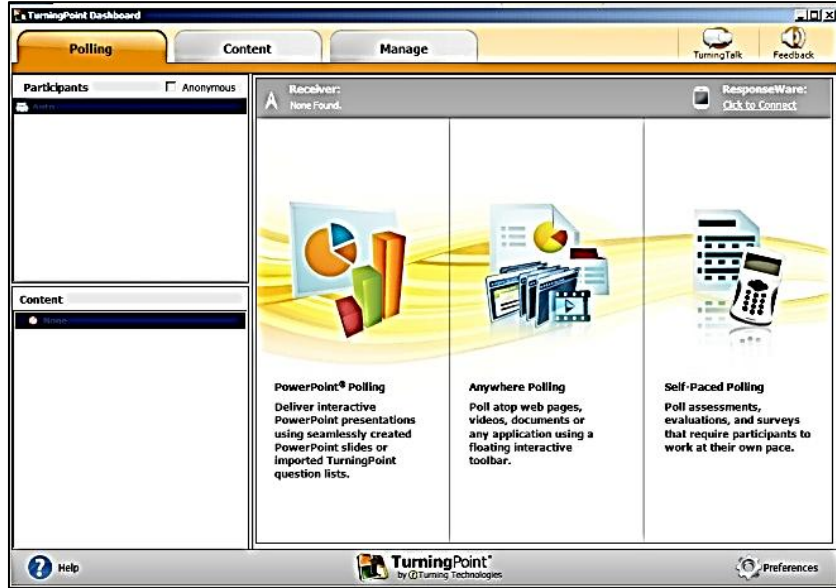
Click **Start, Programs** and **Turning Point V5**

The application will open and three separate tabs show up: **Polling, Content, and Manage.**

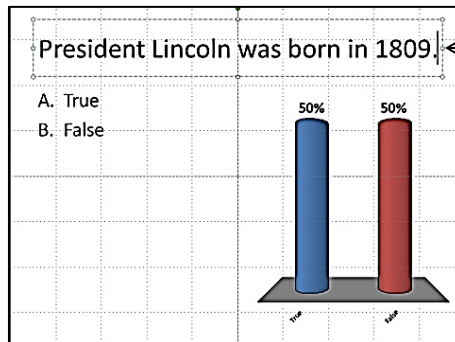
Select the Polling tab (this is the default)
Then click on **“PowerPoint Polling”**

This will open PowerPoint and the **Turning Point** tab will be present in your presentation.

Click on **“New”** ← to create a new question (slide).



Once a question type is selected you can edit the question just like a normal Power Point slide.

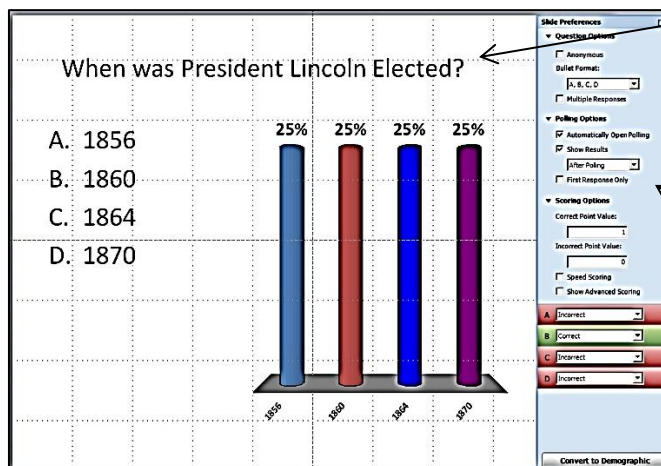


Example of True / False Question

The Preferences are on the right side of each question and can be change for each question (slide).

The Question Options, Polling Options, and Scoring Options can be changed on this preference window.

Under the **Scoring Options** you can select the correct and incorrect answers



Example of Multiple Choice Question

Double click text box to edit and add question choices

Slide Preferences window

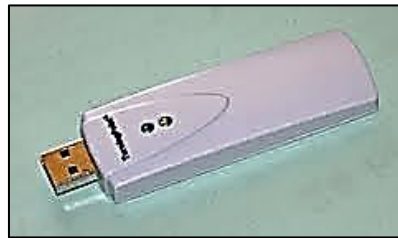
Select Correct/Incorrect Answers here

Creating a Power Point Presentation with Turning Point

Using the Power Point and Polling in Class

Once your presentation is finished you will need to **check out** a set of clickers from the Business Computer Lab.

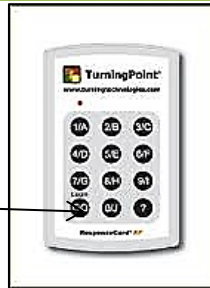
Insert the receiver (USB stick) in the teacher computer.



Turning Point Receiver

Open Turning Point then Open your Power Point.

Make sure to tell all students to press **"GO"** After the light has stopped blinking they are ready to begin polling.



Turning Point Clicker

Start the slide and the polling will open **automatically**.

The **first** mouse click will **close** the polling and graph will show the results of the polling.

The **second** mouse click will advance to the next slide and polling for the next question will **automatically start**.



Polling with **start when slide show begins**.



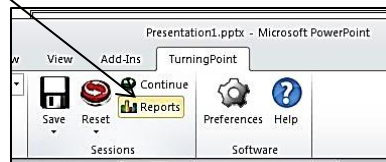
First mouse click will close polling

Viewing Results

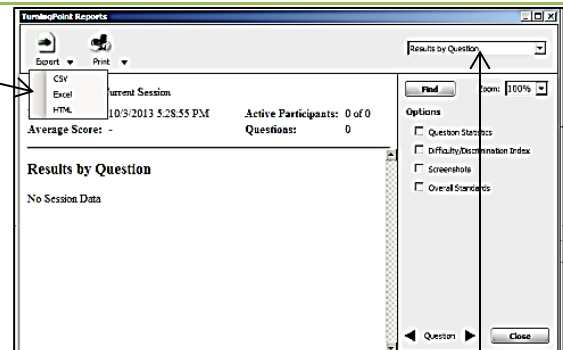
Click on the Reports Icon

There will be a **drop down menu** on the left that allows options to export the data

There will be a **drop down menu** on the right that allows options as to how the results are viewed.



Export Data



Multiple ways to view results