

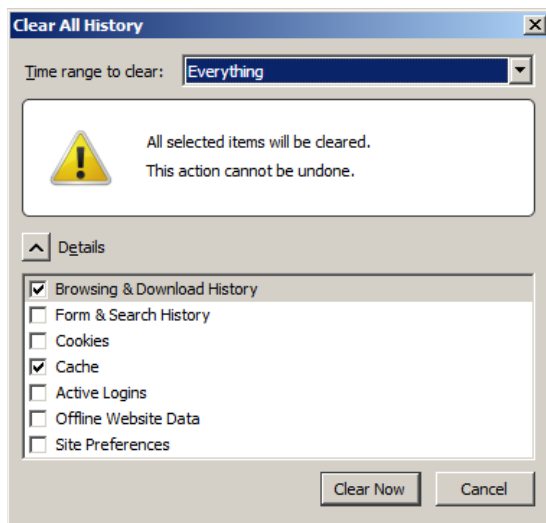
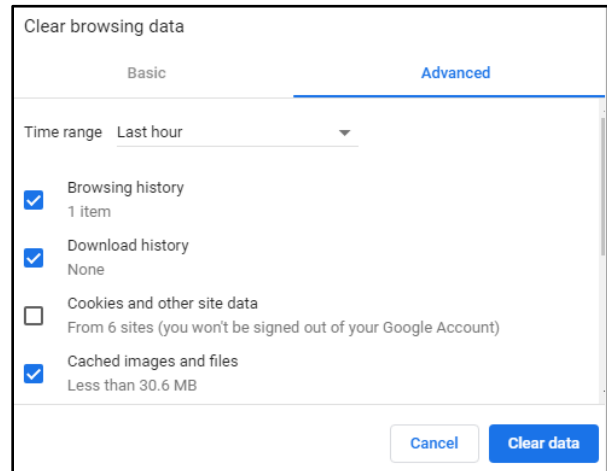
Middle Tennessee State University

How to clear the browser cache?

Chrome ---- >

Press Control-Shift-Delete

- Browsing Data
- Click "Cached images and files" and "Browsing History" and "Download History"
- Clear data



< ----Firefox:

Press Control-Shift-Delete

- Click "Cache" and "Browsing & Download History"
- Clear Now

IE (Internet Explorer) --- >

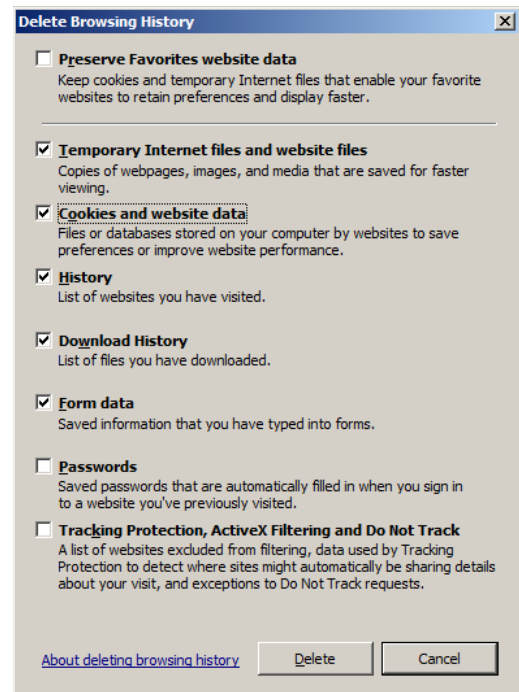
Press Control-Shift-Delete

- Click Temporary Internet Files and website files
- Delete

Also click from Settings

- Internet Options
- General tab
- Browsing History section
- Settings button

Under - "Check for newer versions of stored pages" it should be set to "Every visit to the page" or "Automatically".

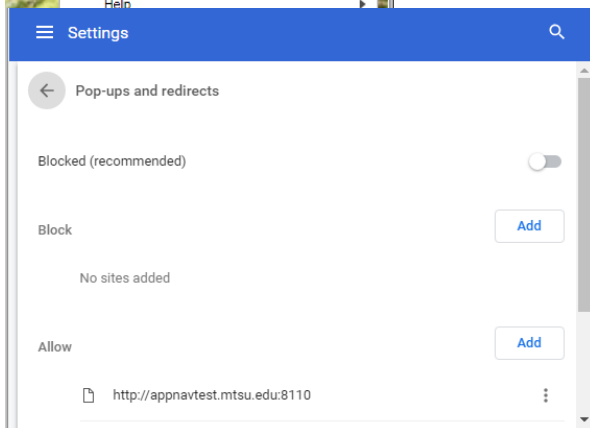
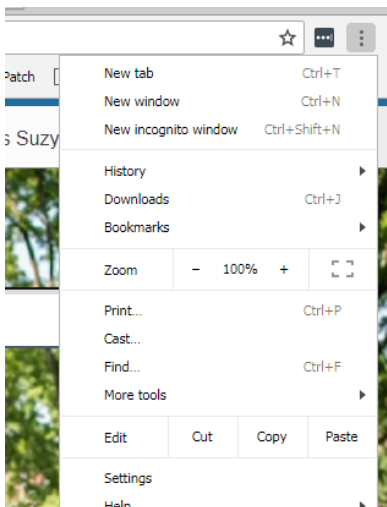
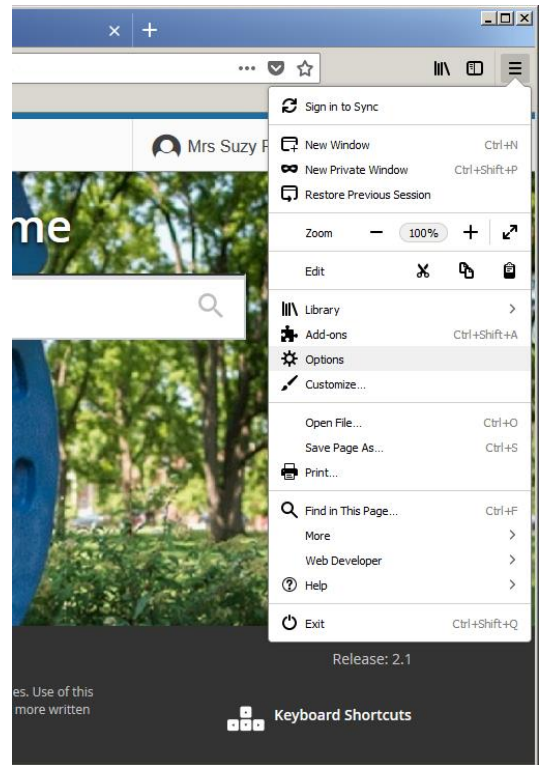


Middle Tennessee State University

How to change the popup blocker settings

Firefox - In Firefox, pop-up blocking is enabled by default.

- Select **Tools-->Options**. The Options window is displayed.
- Select **Privacy & Security**.
- Under Permissions, leave **Block pop-up windows** checked.
- Click on the **Exceptions...** button.
Add the site you want to allow pop-ups by typing in the URL in the box under 'Address of website:' (<http://appnavtest.mtsu.edu:8110> – for test; <http://appnavprod.mtsu.edu:8110> – for prod).
- Click **Allow**.
- Click **Save Changes**. The Allowed Sites window closes.
- Close the Options page



Google Chrome - In Google Chrome, pop-up blocking is enabled by default.

To disable the Google Chrome pop-up blocker:

- Click the Google **Chrome settings** to access browser settings
- Select **'Advanced'**
- Under **Privacy and security**, select .
- Click **Content settings**.
- Select **Pop-ups and redirects**
- Add the location of Banner PROD and Banner TEST if applicable to the Pop-up Blocker exception list (either the Distinguished Name or the IP address will work) in the **Add a new exception pattern** field. (<http://appnavtest.mtsu.edu:8110> – for test; <http://appnavprod.mtsu.edu:8110> – for prod).
- Make sure **Allow** is selected from the **Action** drop-down list.
- Press the Enter key.
- Close the **Content Settings** tab to exit the **Options** window. The task is complete.