

MIDDLE TENNESSEE

STATE UNIVERSITY®

Culture, Cognition, and the Learning Process

Specialist in Education (Ed.S.)

online graduate degree with specialization in
Culture, Cognition, and the Learning Process (CC/LP)





Every year more and more cultural diversity is present in society and public schools across the nation. Current research into cognition considers this diversity. Emerging findings in education, psychology, and neuroscience are helping with better understanding of how learning actually occurs.

The **Specialist in Education graduate degree in Curriculum and Instruction with specialization in Culture, Cognition, and the Learning Process (CC/LP)** is a 30-hour online degree. Courses will provide an opportunity to study impact and influence of educational neuroscience, psychology, and cultural circumstances on teaching and learning in general.

All students must be admitted to the MTSU College of Graduate Studies. Please consult the MTSU Graduate Catalog for more details.

- Ed.S. degree awarded upon completion
- Possibility of continuing to Ph.D./Ed.D. in Education
- May transfer up to 24 hours of doctoral-level work
- No thesis, no comprehensive exam required
- 100% accredited online program
- Flexible: enter any semester, and develop an individualized path to graduation
- Courses on set rotation schedule
- Specialization makes degree unlike any other in Tennessee

Specialist in Education

Curriculum and Instruction Major

Specialization: Culture, Cognition, and the Learning Process

Core Courses (15 semester hours)

FOED 7060	Seminar in Educational Foundations
SPSE 7020	Classroom Management: Methods and Models
SPSE 7170	Learning Theories and the Educational Process
SPSE 7010*	Educational Research Methodology
FOED 7610	Directed Individual Educational Research

*Note: SPSE 7010 is a prerequisite to FOED 7610

Specialized Courses (12 semester hours)

SPSE 7710	Historical and Social Contexts of Multicultural Education
SPSE 7720	Brain-Based Teaching and Learning in the Classroom
SPSE 7730	Human Diversity in a Variety of Learning Environments
FOED 7080	Contributions of Psychology to Education

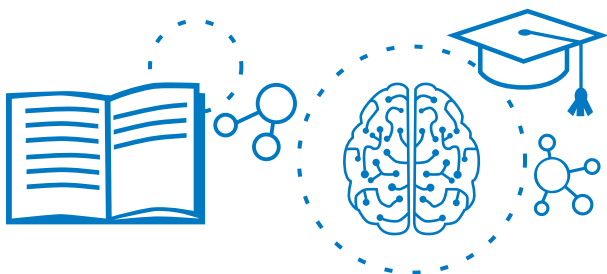
Elective (3 semester hours)

Choose one course from the following:

FOED 6211	Educational Psychology for Classroom Teachers
FOED 6850	Cultural Issues in Education

Another 6000/7000 Education course may be selected with approval of Dr. Young.

To view a recommended course rotation schedule, please visit byoung2017.com.





Contact Information

College of Education

Womack Educational Leadership Department
MTSU Box 91
Murfreesboro, TN 37132
615-898-2855

Advisor/Coordinator

Dr. Barbara Newman Young
Professor of Educational Leadership
Certified Online Educator/Certified Faculty Developer
College of Education Building, Room 383
Murfreesboro, TN 37132

615-898-2209
barbara.young@mtsu.edu
byoung2017.com

mtsu.edu/programs/curriculum-instruction-cclp/
mtsu.edu/faculty/barbara-newman-young

I AM *true*
BLUE™

MIDDLE TENNESSEE STATE UNIVERSITY